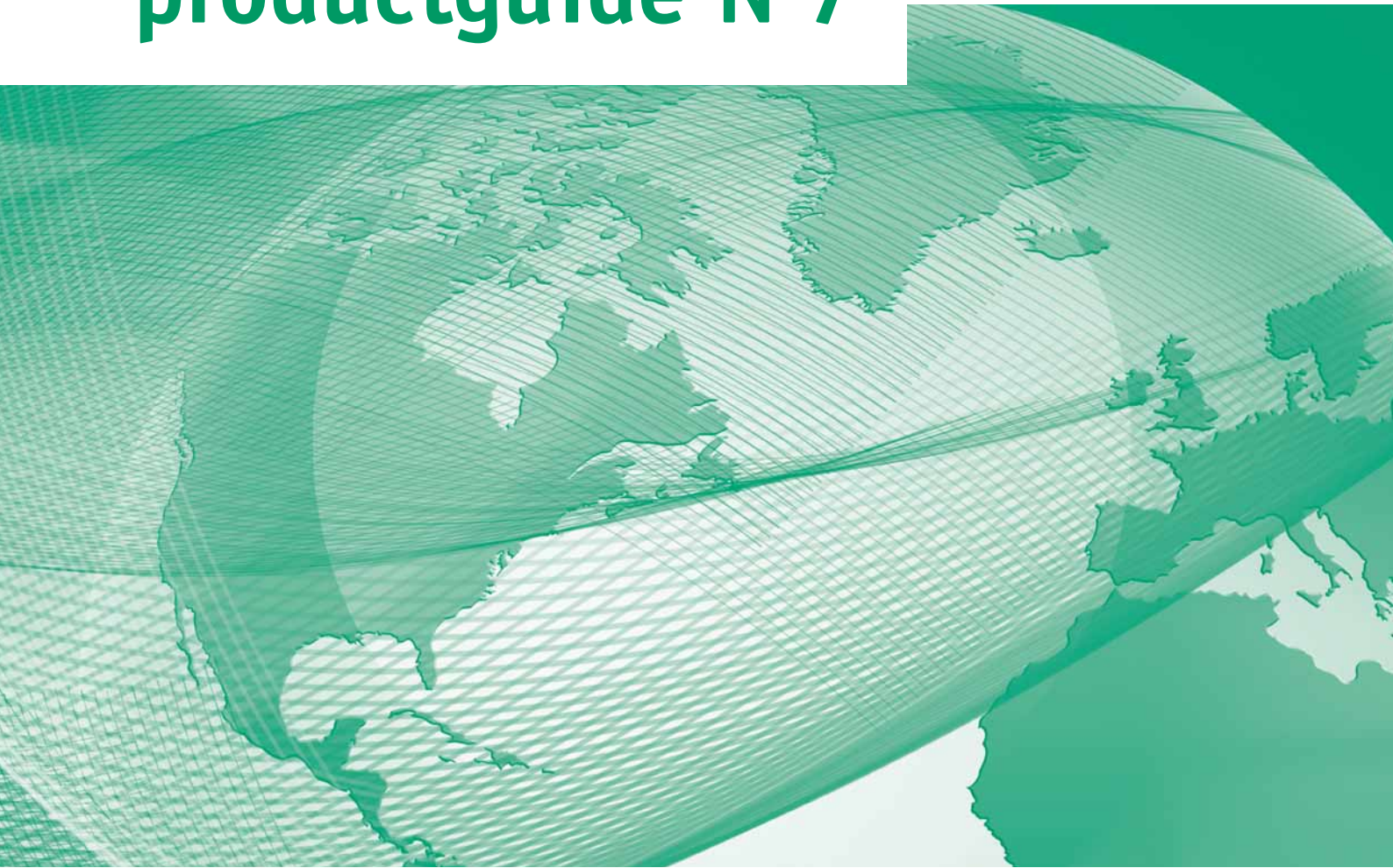


productguide N°7



INT

JENZ

**Utilise valuable resources:
we supply the technology.**



Preface

Dear reader,

our vision over many years has been: „Biomass – energy for the future“. High-powered, mobile machines are required to treat biomasses, and JENZ specialises in the production of these machines. In order that our customers and potential purchasers can get a rapid overview, we recently redesigned our website with a view to these changing requirements and it is now available online. The new design also shapes our current product guide, which we are making available in time for Agritechnica 2013 as we have been doing for many years.

Increasing energy prices are increasingly forcing companies to be clear about the logistic costs for their mobile machines. This is of particular importance, especially for mobile chippers, since these devices are almost always driven to the material and the quantities stored there are seldom extensive. For this reason, we have chosen the chassis as a basis for the classification principle used in the new catalogue instead of the machine itself. If you need a semi-trailer, you can quickly find the mobile chippers and biomass processors which can be supplied for it. We have compiled our stationary machines and woodcrackers in their own separate catalogues.

As ever customising, in other words adapting a machine to the customer's particular requirements, is one of our outstanding strengths. We ask for your understanding that the technical data stated in the product guide can only be taken as an approximation due to the wide range of possible special fittings.

Our company has continued to grow over the last few years. While doing so, we want to do justice to the requirement for sustainability. We have recently started operating a logistics centre which has been constructed to a high ecological standard. Good after-sales service is of exceptional importance to the operator of a special machine. In order to be close to our customers, we have a total of five service bases in the German-speaking countries and can therefore reach every JENZ machine in this area within the shortest possible time. We also have a network of qualified dealers for sales and service everywhere in the world where wood is harvested for energy generation using mobile technology.



This enables to give our customers the certainty that they have made the right decision for a successful future when investing in a JENZ machine.

Your

A handwritten signature in black ink, which appears to read "Uwe Hempten-Hermeier". The signature is written in a cursive style.

Dipl. Oec. Uwe Hempten-Hermeier
Managing director

Editorial

JENZ productguide N° 7

Publisher:

JENZ GmbH

Maschinen- und Fahrzeugbau

Wegholmer Str. 14 | D-32469 Petershagen

Phone: +49 (0) 5704/9409-0

Fax: +49 (0) 5704/9409-47

E-mail: info@jenz.de

Web: www.jenz.de

© October 2013

Liable for content under German press law:

Uwe Hempfen-Hermeier

Contents of this publication has been drawn up with the highest possible diligence. However, we can give no guarantee for the correctness, completeness and topicality of the contents.

Subject to technical alterations.

The models illustrated can contain special equipment which is not within the normal scope of delivery. All figures published must be taken as an approximation.



Contents

Preface	03		
Editorial	04		
Contents	05		
Sustainability	06		
Chippertrucks	07 – 11		
HEM 540 R-Truck	08		
HEM 561 R-Truck	09		
HEM 583 R-Truck	10		
HEM 820 R-Truck	11		
Mobile chippers on HGV frame / hook lift	12 – 21		
HEM 420 DL	13		
HEM 420 DQ	14		
HEM 561 DL	15		
HEM 561 DQ	16		
HEM 581 DL	17		
HEM 582 DQ	18		
HEM 700 DL	19		
HEM 820 DL	20		
HEM 820 DQ	21		
Mobile chippers with hybrid technology	22 – 24		
HEM 820 DQ-Truck	23		
HEM 820 DQ	24		
Power takeoff shaft-driven mobile chipper	25 – 29		
HEM 540 Z	26		
HEM 561 Z	27		
HEM 583 Z	28		
HEM 820 Z	29		
Mobile chippers on centre-axle trailer	30 – 37		
HEM 420 DL	31		
HEM 420 DQ	32		
HEM 561 DL	33		
HEM 561 DQ	34		
HEM 582 DQ	35		
HEM 700 DL	36		
HEM 820 DQ	37		
Mobile chippers on semi-trailer	38 – 41		
HEM 700 DL	39		
HEM 820 DL	40		
HEM 1000 DXL	41		
Mobile chippers on caterpillar tracks	42 – 45		
HEM 420 DL	43		
HEM 561 DL	44		
HEM 700 DL	45		
Biomass processors on centre-axle trailer	46 – 49		
AZ 460 D	47		
BA 715 D	48		
BA 725 D	49		
Biomass processors on semi-trailer	50 – 53		
BA 725 D	51		
BA 725 DXL	52		
BA 965 DXL	53		
Biomass processors on caterpillar tracks	54 – 56		
BA 725 D	55		
BA 965 DXL	56		
Data comparison	57 – 61		
Data comparison			
biomass processors	57		
Data comparison chippers	58 – 61		
Sales and service in more than 45 countries	62 – 63		

Sustainability



We take responsibility. And we do it sustainably.

As a family company in the third generation, JENZ commits explicitly to the basic requirement for sustainability, and has had this guideline firmly anchored in its company policies and the process of certification to DIN ISO 14001 for many years:



We want to offer our customers the best technology available, and also provide benefits to the environment at the same time. On top of this, we identify and assess the direct and indirect effects on the environment caused by our products in addition to the resources used during our operational production process.

The machines produced in our works in Petershagen are manufactured CO₂-neutral on balance. The heat energy required is produced by our biomass heating, the wood comes from local forests. The photovoltaic equipment on our roofs provides the entire production and administration with clean, regenerative power to 100% on balance.



Shareholder family Hermeier

Chippertruck



HEM 540 R-Truck

LKW chipper with two axles and 18 tonnes overall weight

short facts

Performance potential

Fragmentisation of hardwood up to (in cm)	42
Fragmentisation of softwood up to (in cm)	56
Throughput up to approx. (in lcm)	100

Draw-in opening

Draw-in width (mm)	790
Draw-in height (mm)	610

Fragmentisation unit

Drum diameter (mm)	820
Number of blades, half-fitting (full)	8 (16)

Material outfeed

Mechanical blower outfeed	●
Hydraulic blower outfeed	○
Conveyor outfeed	○

Main drive

Standard diesel motor	MAN, Euro 5
Power in kW / HP	265 / 360

Chassis

Number of axles	2
Top speed (km/h)	80

Weight (without crane)

Weight / basic design approx. (in kg)	17800
Permissible axle loading (in kg)	18000
Permissible overall weight (in kg)	18000

Transport position dimensions

Length (mm)	7650
Width (mm)	2550
Height (mm)	3800

Control system

easygreen	●
DIP	●
automatic overload control	●
Draw-in speed preselection	●
15-channel radio remote control	○



Field of application:

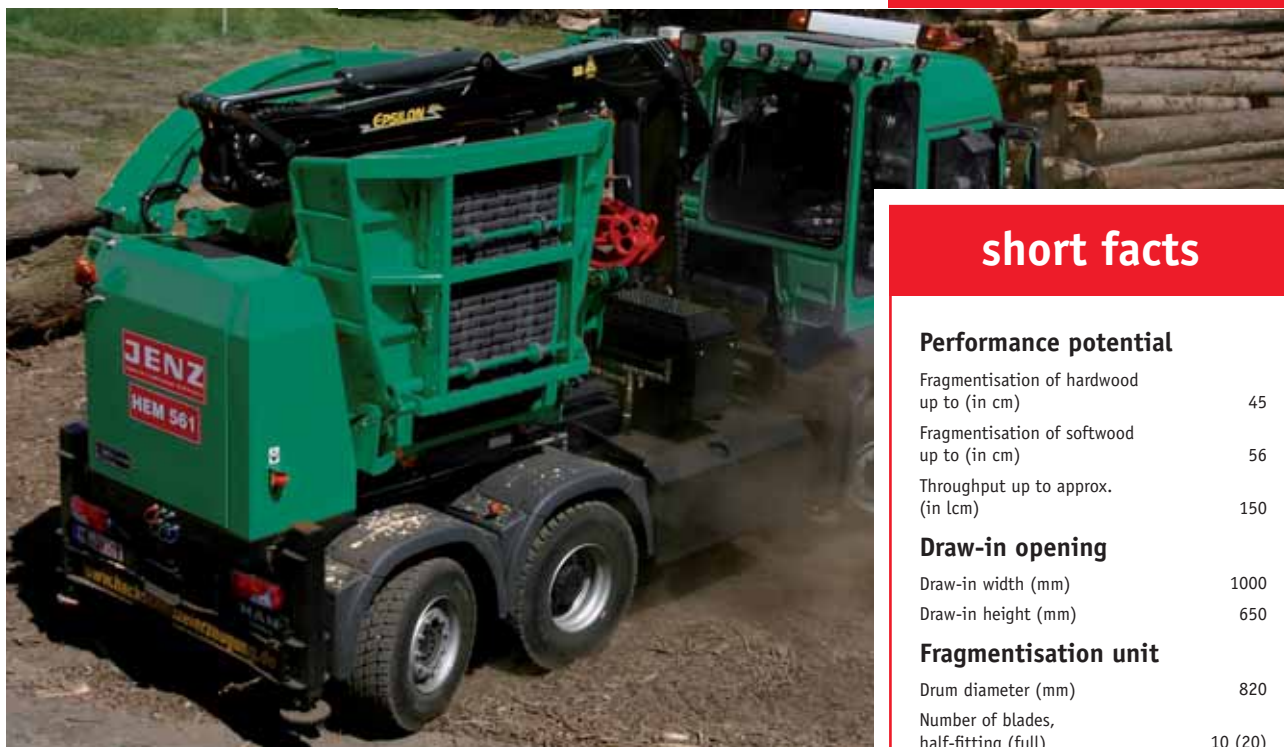
- shrubs and standing timber up to approx. 560 mm diameter
- alternative to tractor with power takeoff shaft chipper
- ideal machine for small jobs
- ideal for working in restricted spaces
- large deployment radius

Special features:

- smallest and lightest JENZ chippertruck
- low purchase and operating costs
- chipper drive via HGV motor
- compact dimensions
- low deadweight (18 tonnes)
- only HGV chipper with 2-axle chassis
- large screen area for best chipping quality
- comfortable working position
- 80 km/h top speed

Solid HGV chipper
in upper entry-level class

HEM 561 R-Truck



short facts

Performance potential

Fragmentisation of hardwood up to (in cm)	45
Fragmentisation of softwood up to (in cm)	56
Throughput up to approx. (in lcm)	150

Draw-in opening

Draw-in width (mm)	1000
Draw-in height (mm)	650

Fragmentisation unit

Drum diameter (mm)	820
Number of blades, half-fitting (full)	10 (20)

Material outfeed

Mechanical blower outfeed	●
Hydraulic blower outfeed	○
Conveyor outfeed	○

Main drive

Standard diesel motor	MAN, Euro 5
Power in kW / HP	265 / 360

Chassis

Number of axles	3
Top speed (km/h)	80

Weight (without crane)

Weight / basic design approx. (in kg)	22750
Permissible axle loading (in kg)	26000
Permissible overall weight (in kg)	26000

Transport position dimensions

Length (mm)	7500
Width (mm)	2550
Height (mm)	3950

Control system

easygreen	●
DIP	●
automatic overload control	●
Draw-in speed preselection	●
15-channel radio remote control	○

Field of application:

- shrubs and standing timber up to approx. 560 mm diameter
- ideal for working in restricted spaces
- large deployment radius

Special features:

- HGV chipper on three axles
- low purchase and operating costs
- chipper drive via HGV motor
- comfortable working position
- 80 km/h top speed

All data is based on the basic machine version and should be taken as an approximation.
● Included in standard machine delivery ○ Option, available at extra cost

Optimised successor to bestseller HEM 582 R-Truck

HEM 583 R-Truck

Professional HGV chipper with three axles

short facts

Performance potential

Fragmentisation of hardwood up to (in cm)	45
Fragmentisation of softwood up to (in cm)	56
Throughput up to approx. (in lcm)	200

Draw-in opening

Draw-in width (mm)	1200
Draw-in height (mm)	680

Fragmentisation unit

Drum diameter (mm)	820
Number of blades, half-fitting (full)	12 (24)

Material outfeed

Mechanical blower outfeed	<input type="radio"/>
Hydraulic blower outfeed	<input checked="" type="radio"/>
Conveyor outfeed	<input checked="" type="radio"/>

Main drive

Standard diesel motor	MAN, Euro 5
Power in kW / HP	397 / 540

Chassis

Number of axles	3
Top speed (km/h)	80

Weight (without crane)

Weight / basic design approx. (in kg)	24000
Permissible axle loading (in kg)	26000
Permissible overall weight (in kg)	26000

Transport position dimensions

Length (mm)	7700
Width (mm)	2550
Height (mm)	4000

Control system

easygreen	<input checked="" type="radio"/>
DIP	<input checked="" type="radio"/>
automatic overload control	<input checked="" type="radio"/>
Draw-in speed preselection	<input checked="" type="radio"/>
15-channel radio remote control	<input type="radio"/>



Field of application:

- shrubs and standing timber up to approx. 560 mm diameter
- ideal for working in restricted spaces
- large deployment radius

Special features:

- chipper drive via HGV motor
- extra-large screen area for best chipping quality
- enormous screen basket cover swivel capability for optimal accessibility of rotor and screen basket changing without tools
- optimised draw-in table for continuous material draw-in
- material outfeed via hydraulic blower can be fitted centrally between driver's cab and chipper cell on request
- comfortable working position
- compact dimensions, low weight and small turning circle
- 80 km/h top speed

HGV coarse chipper with three axles

HEM 820 R-Truck



short facts

Performance potential

Fragmentisation of hardwood
up to (in cm) 60

Fragmentisation of softwood
up to (in cm) 80

Throughput up to approx.
(in tcm) 280

Draw-in opening

Draw-in width (mm) 1200

Draw-in height (mm) 820

Fragmentisation unit

Drum diameter (mm) 1040

Number of blades,
half-fitting (full) 12 (24)

Material outfeed

Mechanical blower outfeed ●

Hydraulic blower outfeed ◐

Conveyor outfeed ○

Main drive

Standard diesel motor MAN, Euro 5

Power in kW / HP 397 / 540

Chassis

Number of axles 3

Top speed (km/h) 80

Weight (without crane)

Weight / basic design approx.
(in kg) 26000

Permissible axle loading
(in kg) 26000

Permissible overall weight
(in kg) 26000

Transport position dimensions

Length (mm) 7740

Width (mm) 2550

Height (mm) 4000

Control system

easygreen ●

DIP ●

automatic overload control ●

Draw-in speed preselection ●

15-channel radio remote control ◐

Field of application:

- shrubs and standing timber
up to approx. 800 mm diameter
- high-powered chipping
in restricted spaces
- large deployment radius

Special features:

- drive via HGV motor
- large draw-in makes processing
of bulky material and thick trunks
easier
- extremely large screen area for
best chipping quality
- enormous screen basket cover
swivel capability for optimal
accessibility of rotor and screen
basket changing without tools
- comfortable working position
- compact dimensions
- small turning circle
- 80 km/h top speed

All data is based on the basic machine version and should be taken as an approximation.
● Included in standard machine delivery ◐ Option, available at extra cost ○ Not available

Mobile chipper on HGV frame / hook lift

Mobile chipper on HGV frame / hook lift



Compact mobile chipper with longitudinal draw-in and add-on motor

HEM 420 DL



short facts

Performance potential

Fragmentisation of hardwood up to (in cm)	30
Fragmentisation of softwood up to (in cm)	42
Throughput up to approx. (in lcm)	100

Draw-in opening

Draw-in width (mm)	1000
Draw-in height (mm)	420

Fragmentisation unit

Drum diameter (mm)	620
Number of blades, half-fitting (full)	10 (20)

Material outfeed

Mechanical blower outfeed	●
Hydraulic blower outfeed	○
Conveyor outfeed	○

Main drive

	Mercedes-Benz, OM 926 LA, Euromot 3B
Standard diesel motor	
Power in kW / HP	240 / 326

Weight (without crane)

Weight / basic design approx. (in kg)	11500
---------------------------------------	-------

Transport position dimensions

Length (mm)	7000
Width (mm)	2550
Height (mm)	2400

Control system

easygreen	●
DIP	●
Sensotronic	●
automatic overload control	●
Draw-in speed preselection	●
15-channel radio remote control	○

Field of application:

- shrubs and standing timber up to approx. 420 mm diameter
- deployment on various carrier vehicles
- ideal for working in restricted spaces
- large deployment radius

Special features:

- smallest JENZ mobile chipper with add-on motor
- pivoted chipper
- problem-free setup on hook lift HGV
- low deadweight
- compact dimensions
- 80 km/h top speed

All data is based on the basic machine version and should be taken as an approximation.
 ● Included in standard machine delivery ● Option, available at extra cost ○ Not available

HEM 420 DQ

Compact mobile chipper with transverse draw-in and add-on motor

short facts

Performance potential

Fragmentisation of hardwood up to (in cm)	30
Fragmentisation of softwood up to (in cm)	42
Throughput up to approx. (in lcm)	100

Draw-in opening

Draw-in width (mm)	1000
Draw-in height (mm)	420

Fragmentisation unit

Drum diameter (mm)	620
Number of blades, half-fitting (full)	10 (20)

Material outfeed

Mechanical blower outfeed	●
Hydraulic blower outfeed	○
Conveyor outfeed	○

Main drive

Standard diesel motor	Mercedes-Benz, OM 926 LA, Euromot 3B
Power in kW / HP	240 / 326

Weight (without crane)

Weight / basic design approx. (in kg)	12000
---------------------------------------	-------

Transport position dimensions

Length (mm)	7050
Width (mm)	2550
Height (mm)	2700

Control system

easygreen	●
DIP	●
Sensotronic	●
automatic overload control	●
Draw-in speed preselection	●
15-channel radio remote control	○



Field of application:

- shrubs and standing timber up to approx. 420 mm diameter
- deployment on various carrier vehicles
- ideal for working in restricted spaces
- large deployment radius

Special features:

- smallest JENZ mobile chipper with add-on motor
- problem-free setup on hook lift HGV
- low deadweight
- compact dimensions
- 80 km/h top speed

HGV chipper with longitudinal draw-in and add-on motor

HEM 561 DL



short facts

Performance potential

Fragmentisation of hardwood up to (in cm) 42

Fragmentisation of softwood up to (in cm) 56

Throughput up to approx. (in lcm) 150

Draw-in opening

Draw-in width (mm) 1000

Draw-in height (mm) 650

Fragmentisation unit

Drum diameter (mm) 820

Number of blades, half-fitting (full) 10 (20)

Material outfeed

Mechanical blower outfeed ●

Hydraulic blower outfeed ○

Conveyor outfeed ○

Main drive

Standard diesel motor Mercedes-Benz, OM 471 LA, Emiss. cat. IV

Power in kW / HP 360 / 490

Weight (without crane)

Weight / basic design approx. (in kg) 13000

Transport position dimensions

Length (mm) 6925

Width (mm) 2550

Height (mm) 2670

Control system

easygreen ●

DIP ●

Sensotronic ●

automatic overload control ●

Draw-in speed preselection ●

15-channel radio remote control ○

Field of application:

- shrubs and standing timber up to approx. 560 mm diameter
- deployment on various carrier vehicles
- large deployment radius

Special features:

- largest chipper with add-on motor on 3-axle HGV
- crane drive via HGV motor
- pivoted chipper
- 80 km/h top speed

HEM 561 DQ

HGV chipper with transverse draw-in and add-on motor

short facts

Performance potential

Fragmentisation of hardwood up to (in cm)	42
Fragmentisation of softwood up to (in cm)	56
Throughput up to approx. (in lcm)	150

Draw-in opening

Draw-in width (mm)	1000
Draw-in height (mm)	650

Fragmentisation unit

Drum diameter (mm)	820
Number of blades, half-fitting (full)	10 (20)

Material outfeed

Mechanical blower outfeed	●
Hydraulic blower outfeed	○
Conveyor outfeed	○

Main drive

Standard diesel motor	Mercedes-Benz, OM 471 LA, Emiss. cat. IV
Power in kW / HP	360 / 490

Weight (without crane)

Weight / basic design approx. (in kg)	13000
---------------------------------------	-------

Transport position dimensions

Length (mm)	6310
Width (mm)	2550
Height (mm)	2700

Control system

easygreen	●
DIP	●
Sensotronic	●
automatic overload control	●
Draw-in speed preselection	●
15-channel radio remote control	○



Field of application:

- shrubs and standing timber up to approx. 560 mm diameter
- deployment on various carrier vehicles
- large deployment radius

Special features:

- largest chipper with add-on motor on 3-axle HGV
- crane drive via HGV motor
- 80 km/h top speed

Smallest chipper with longitudinal draw-in on 4-axle HGV

HEM 581 DL



short facts

Performance potential

Fragmentisation of hardwood up to (in cm)	42
Fragmentisation of softwood up to (in cm)	56
Throughput up to approx. (in lcm)	170

Draw-in opening

Draw-in width (mm)	1200
Draw-in height (mm)	680

Fragmentisation unit

Drum diameter (mm)	820
Number of blades, half-fitting (full)	12 (24)

Material outfeed

Mechanical blower outfeed	●
Hydraulic blower outfeed	○
Conveyor outfeed	○

Main drive

	Mercedes-Benz, OM 471 LA, Emiss. cat. IV
Standard diesel motor	
Power in kW / HP	390 / 530

Weight (without crane)

Weight / basic design approx. (in kg)	15500
---------------------------------------	-------

Transport position dimensions

Length (mm)	7550
Width (mm)	2550
Height (mm)	2700

Control system

easygreen	●
DIP	●
Sensotronic	●
automatic overload control	●
Draw-in speed preselection	●
15-channel radio remote control	○

Field of application:

- shrubs and standing timber up to approx. 560 mm diameter
- high-powered chipper with large deployment radius

Special features:

- driver via high-powered add-on motor
- crane drive via HGV motor
- pivoted chipper
- 1.20 m wide draw-in makes processing of bulky material easier
- extra-large screen area for best chipping quality
- enormous screen basket cover swivel capability for optimal accessibility of rotor and screen basket changing without tools
- 80 km/h top speed

All data is based on the basic machine version and should be taken as an approximation.
 ● Included in standard machine delivery ○ Option, available at extra cost ○ Not available

HEM 582 DQ

Smallest chipper with transverse draw-in on 4-axle HGV

short facts

Performance potential

Fragmentisation of hardwood up to (in cm) 45

Fragmentisation of softwood up to (in cm) 56

Throughput up to approx. (in lcm) 180

Draw-in opening

Draw-in width (mm) 1200

Draw-in height (mm) 680

Fragmentisation unit

Drum diameter (mm) 820

Number of blades, half-fitting (full) 12 (24)

Material outfeed

Mechanical blower outfeed ●

Hydraulic blower outfeed ○

Conveyor outfeed ○

Main drive

Standard diesel motor Mercedes-Benz, OM 460 LA, Euromot 3B

Power in kW / HP 375 / 510

Weight (without crane)

Weight / basic design approx. (in kg) 15800

Transport position dimensions

Length (mm) 5850

Width (mm) 2550

Height (mm) 2850

Control system

easygreen ●

DIP ●

Sensotronic ●

automatic overload control ●

Draw-in speed preselection ●

15-channel radio remote control ○



Field of application:

- shrubs and standing timber up to approx. 560 mm diameter
- high-powered chipper with large deployment radius

Special features:

- driver via high-powered add-on motor
- crane drive via HGV motor
- 1.20 m wide draw-in makes processing of bulky material easier
- extra-large screen area for best chipping quality
- enormous screen basket cover swivel capability for optimal accessibility of rotor and screen basket changing without tools
- 80 km/h top speed

High-powered HGV chipper with longitudinal draw-in and add-on motor

HEM 700 DL



short facts

Performance potential

Fragmentisation of hardwood up to (in cm)	50
Fragmentisation of softwood up to (in cm)	70
Throughput up to approx. (in tcm)	220

Draw-in opening

Draw-in width (mm)	1000
Draw-in height (mm)	700

Fragmentisation unit

Drum diameter (mm)	1040
Number of blades, half-fitting (full)	10 (20)

Material outfeed

Mechanical blower outfeed	●
Hydraulic blower outfeed	◐
Conveyor outfeed	◑

Main drive

Standard diesel motor	Mercedes-Benz, OM 473 LA, Emiss. cat. IV
Power in kW / HP	400 / 544
CAT C18 Level 2	◐

Weight (without crane)

Weight / basic design approx. (in kg)	16500
---------------------------------------	-------

Transport position dimensions

Length (mm)	7440
Width (mm)	2550
Height (mm)	2700

Control system

easygreen	●
DIP	●
Sensotronic	●
automatic overload control	●
Draw-in speed preselection	●
15-channel radio remote control	●

Field of application:

- shrubs and standing timber up to approx. 700 mm diameter
- ideal machine for long, thick standing timber
- flexible working on both sides
- large deployment radius

Special features:

- driver via high-powered add-on motor
- very high throughput rate
- pivoted chipper
- generously-dimensioned longitudinal draw-in makes processing bulky material easier
- material outfeed via blower or conveyor belt
- 80 km/h top speed

HEM 820 DL

HGV coarse chipper with longitudinal draw-in and add-on motor

short facts

Performance potential

Fragmentisation of hardwood up to (in cm)	60
Fragmentisation of softwood up to (in cm)	80
Throughput up to approx. (in lcm)	300

Draw-in opening

Draw-in width (mm)	1200
Draw-in height (mm)	820

Fragmentisation unit

Drum diameter (mm)	1040
Number of blades, half-fitting (full)	12 (24)

Material outfeed

Mechanical blower outfeed	●
Hydraulic blower outfeed	○
Conveyor outfeed	○

Main drive

Standard diesel motor	Mercedes-Benz, OM 473 LA, Emiss. cat. IV
Power in kW / HP	400 / 544
CAT C18 Level 2	●

Weight (without crane)

Weight / basic design approx. (in kg)	19100
---------------------------------------	-------

Transport position dimensions

Length (mm)	7870
Width (mm)	2550
Height (mm)	2790

Control system

easygreen	●
DIP	●
Sensotronic	●
automatic overload control	●
Draw-in speed preselection	●
15-channel radio remote control	●



Field of application:

- shrubs and standing timber up to approx. 800 mm diameter
- ideal machine for long, thick standing timber
- flexible working on both sides
- chipping in continuous operation
- large deployment radius

Special features:

- chipper and blower drive via high-powered add-on motor
- crane drive via HGV motor
- extremely high throughput rate
- pivoted chipper
- generously-dimensioned longitudinal draw-in makes processing bulky material easier
- extremely large screen area for best chipping quality
- enormous screen basket cover swivel capability for optimum accessibility of rotor and for screen basket changing without tools
- 80 km/h top speed

HGV coarse chipper with transverse draw-in and add-on motor

HEM 820 DQ



short facts

Performance potential

Fragmentisation of hardwood up to (in cm)	60
Fragmentisation of softwood up to (in cm)	80
Throughput up to approx. (in tcm)	300

Draw-in opening

Draw-in width (mm)	1200
Draw-in height (mm)	820

Fragmentisation unit

Drum diameter (mm)	1040
Number of blades, half-fitting (full)	12 (24)

Material outfeed

Mechanical blower outfeed	●
Hydraulic blower outfeed	○
Conveyor outfeed	○

Main drive

Standard diesel motor	Mercedes-Benz, OM 473 LA, Emiss. cat. IV
Power in kW / HP	400 / 544
CAT C18 Level 2	●

Weight (without crane)

Weight / basic design approx. (in kg)	19500
---------------------------------------	-------

Transport position dimensions

Length (mm)	7615
Width (mm)	2550
Height (mm)	3000

Control system

easygreen	●
DIP	●
Sensotronic	●
automatic overload control	●
Draw-in speed preselection	●
15-channel radio remote control	○

Field of application:

- shrubs and standing timber up to approx. 800 mm diameter
- ideal machine for thick standing timber
- chipping in continuous operation
- large deployment radius

Special features:

- compact 4-axle HGV
- chipper and blower drive via high-powered add-on motor
- extremely high throughput rate
- large draw-in makes processing of bulky material and thick trunks easier
- extremely large screen area for best chipping quality
- enormous screen basket cover swivel capability for optimal accessibility of rotor and screen basket changing without tools
- 80 km/h top speed

All data is based on the basic machine version and should be taken as an approximation.
 ● Included in standard machine delivery ● Option, available at extra cost ○ Not available

Mobile chipper with hybrid technology

Mobile chipper with hybrid technology



HGV coarse chipper with transverse draw-in and hybrid technology

HEM 820 DQ-Truck



short facts

Performance potential

Fragmentisation of hardwood up to (in cm)	60
Fragmentisation of softwood up to (in cm)	80
Throughput up to approx. (in lcm)	320

Draw-in opening

Draw-in width (mm)	1200
Draw-in height (mm)	820

Fragmentisation unit

Drum diameter (mm)	1040
Number of blades, half-fitting (full)	12 (24)

Material outfeed

Mechanical blower outfeed	●
Hydraulic blower outfeed	○
Conveyor outfeed	○

Main drive

Standard diesel motor	Mercedes-Benz, OM 473 LA, Emiss. cat. IV MAN, Euro 5
Power in kW / HP	400 / 544 324 / 440
CAT C18 Level 2	●

Chassis

Number of axles	4
Top speed (km/h)	80

Weight (without crane)

Weight / basic design approx. (in kg)	32000
Permissible axle loading (in kg)	32000
Permissible overall weight (in kg)	32000

Transport position dimensions

Length (mm)	9650
Width (mm)	2550
Height (mm)	4000

Control system

easygreen	●
DIP	●
Sensotronic	●
automatic overload control	●
Draw-in speed preselection	●
15-channel radio remote control	○

Field of application:

- shrubs and standing timber up to approx. 800 mm diameter
- ideal machine for thick standing timber
- chipping in continuous operation
- large deployment radius

Special features:

- compact 4-axle HGV
- hybrid technology for highest efficiency: chipper drive via high-powered add-on motor and blower drive via HGV motor
- extremely high throughput rate
- large draw-in makes processing of bulky material and thick trunks easier
- extremely large screen area for best chipping quality
- enormous screen basket cover swivel capability for optimal accessibility of rotor and screen basket changing without tools

All data is based on the basic machine version and should be taken as an approximation.
 ● Included in standard machine delivery ● Option, available at extra cost ○ Not available

HEM 820 DQ

HGV coarse chipper with transverse draw-in and hybrid technology

short facts

Performance potential

Fragmentisation of hardwood up to (in cm)	60
Fragmentisation of softwood up to (in cm)	80
Throughput up to approx. (in lcm)	320

Draw-in opening

Draw-in width (mm)	1200
Draw-in height (mm)	820

Fragmentisation unit

Drum diameter (mm)	1040
Number of blades, half-fitting (full)	12 (24)

Material outfeed

Mechanical blower outfeed	●
Hydraulic blower outfeed	○
Conveyor outfeed	○

Main drive

Standard diesel motor	Mercedes-Benz, OM 473 LA, Emiss cat. IV
Power in kW / HP	400 / 544
CAT C18 Level 2	●
Power consumption approx. (kW)	on request

Chassis

Number of axles	2
Top speed (km/h)	80

Weight (without crane)

Weight / basic design approx. (in kg)	21500
Permissible axle loading (in kg)	20000
Permissible drawbar loading (in kg)	2000
Permissible overall weight (in kg)	22000

Transport position dimensions

Length (mm)	8700
Width (mm)	2550
Height (mm)	4000

Control system

easygreen	●
DIP	●
Sensotronic	●
automatic overload control	●
Draw-in speed preselection	●
15-channel radio remote control	○



Field of application:

- shrubs and standing timber up to approx. 800 mm diameter
- ideal machine for thick standing timber
- high-powered chipping in continuous operation independent of towing vehicle

Special features:

- hybrid technology for highest efficiency: chipper drive via high-powered add-on motor and blower drive via power takeoff shaft
- extremely high throughput rate
- large draw-in makes processing of bulky material and thick trunks easier
- extremely large screen area for best chipping quality
- enormous screen basket cover swivel capability for optimal accessibility of rotor and screen basket changing without tools

All data is based on the basic machine version and should be taken as an approximation.
 ● Included in standard machine delivery ● Option, available at extra cost ○ Not available

Power takeoff shaft-driven mobile chipper



HEM 540 Z

Compact mobile chipper with power takeoff drive

short facts

Performance potential

Fragmentisation of hardwood up to (in cm)	42
Fragmentisation of softwood up to (in cm)	56
Throughput up to approx. (in lcm)	100

Draw-in opening

Draw-in width (mm)	790
Draw-in height (mm)	610

Fragmentisation unit

Drum diameter (mm)	820
Number of blades, half-fitting (full)	8 (16)

Material outfeed

Mechanical blower outfeed	●
Hydraulic blower outfeed	○
Conveyor outfeed	○

Main drive

Power consumption approx. (kW)	100 - 265
--------------------------------	-----------

Chassis

Number of axles	1
Top speed (km/h)	60

Weight (without crane)

Weight / basic design approx. (in kg)	8500
Permissible axle loading (in kg)	10000
Permissible drawbar loading (in kg)	2000
Permissible overall weight (in kg)	12000

Transport position dimensions

Length (mm)	5100
Width (mm)	2550
Height (mm)	3600

Control system

easygreen	●
DIP	●
automatic overload control	●
Draw-in speed preselection	●
15-channel radio remote control	○
Z-tronic	●



Field of application:

- shrubs and standing timber up to approx. 560 mm diameter
- drive via power takeoff shaft with tractors between 100 and 265 kW
- ideal for working in restricted spaces
- ideal machine for small jobs

Special features:

- smallest power takeoff drive-driven mobile chipper from JENZ
- low purchase and operating costs
- only HGV chipper with 1-axle chassis
- large screen area for best chipping quality

Mobile chipper in middle-class with power takeoff drive

HEM 561 Z



short facts

Performance potential

Fragmentisation of hardwood up to (in cm) 42

Fragmentisation of softwood up to (in cm) 56

Throughput up to approx. (in tcm) 120

Draw-in opening

Draw-in width (mm) 1000

Draw-in height (mm) 650

Fragmentisation unit

Drum diameter (mm) 820

Number of blades, half-fitting (full) 10 (20)

Material outfeed

Mechanical blower outfeed ●

Hydraulic blower outfeed ○

Conveyor outfeed ○

Main drive

Power consumption approx. (kW) 100 - 235

Chassis

Number of axles 2

Top speed (km/h) 80

Weight (without crane)

Weight / basic design approx. (in kg) 9600

Permissible axle loading (in kg) 13000

Permissible drawbar loading (in kg) 1000

Permissible overall weight (in kg) 14000

Transport position dimensions

Length (mm) 5920

Width (mm) 2550

Height (mm) 3600

Control system

easygreen ●

DIP ●

automatic overload control ●

Draw-in speed preselection ●

15-channel radio remote control ●

Z-tronic ●

Field of application:

- shrubs and standing timber up to approx. 560 mm diameter
- drive via power takeoff shaft with tractors between 100 and 235 kW

Special features:

- manageable purchase and operating costs
- power takeoff shaft chipper in medium segment
- low deadweight

Optimised successor to bestseller HEM 582 Z

HEM 583 Z

Professional mobile chipper
with power takeoff drive

short facts

Performance potential

Fragmentisation of hardwood up to (in cm)	45
Fragmentisation of softwood up to (in cm)	56
Throughput up to approx. (in lcm)	200

Draw-in opening

Draw-in width (mm)	1200
Draw-in height (mm)	680

Fragmentisation unit

Drum diameter (mm)	820
Number of blades, half-fitting (full)	12 (24)

Material outfeed

Mechanical blower outfeed	<input type="radio"/>
Hydraulic blower outfeed	<input checked="" type="radio"/>
Conveyor outfeed	<input type="radio"/>

Main drive

Power consumption approx. (kW)	132 - 350
--------------------------------	-----------

Chassis

Number of axles	2
Top speed (km/h)	80

Weight (without crane)

Weight / basic design approx. (in kg)	11200
Permissible axle loading (in kg)	16000
Permissible drawbar loading (in kg)	2000
Permissible overall weight (in kg)	18000

Transport position dimensions

Length (mm)	6240
Width (mm)	2550
Height (mm)	3700

Control system

easygreen	<input checked="" type="radio"/>
DIP	<input checked="" type="radio"/>
automatic overload control	<input checked="" type="radio"/>
Draw-in speed preselection	<input checked="" type="radio"/>
15-channel radio remote control	<input type="radio"/>
Z-tronic	<input checked="" type="radio"/>



Field of application:

- shrubs and standing timber up to approx. 560 mm diameter
- drive via power takeoff shaft with large tractors between 132 and 350 kW

Special features:

- optimised draw-in table for continuous material draw-in
- aggressive upper draw-in roller for better draw-in behaviour
- extra-large screen area for best chipping quality
- compact dimensions and comparably low weight
- enormous screen basket cover swivel capability for optimal accessibility of rotor and screen basket changing without tools
- material outfeed via hydraulic blower or conveyor belt

Professional mobile chipper with power takeoff drive

HEM 820 Z



Field of application:

- shrubs and standing timber up to approx. 800 mm diameter
- drive via power takeoff shaft with large tractors between 150 and 400 kW

Special features:

- largest power takeoff drive-driven mobile chipper from JENZ
- extremely high throughput (depending on drive power)
- large draw-in makes processing of bulky material and thick trunks easier
- extremely large screen area for best chipping quality
- enormous screen basket cover swivel capability for optimal accessibility of rotor
- screen basket changing without tools

short facts

Performance potential

Fragmentisation of hardwood up to (in cm)	60
Fragmentisation of softwood up to (in cm)	80
Throughput up to approx. (in tcm)	260

Draw-in opening

Draw-in width (mm)	1200
Draw-in height (mm)	820

Fragmentisation unit

Drum diameter (mm)	1040
Number of blades, half-fitting (full)	12 (24)

Material outfeed

Mechanical blower outfeed	●
Hydraulic blower outfeed	◐
Conveyor outfeed	○

Main drive

Power consumption approx. (kW)	150 - 400
--------------------------------	-----------

Chassis

Number of axles	2
Top speed (km/h)	80

Weight (without crane)

Weight / basic design approx. (in kg)	13800
Permissible axle loading (in kg)	16000
Permissible drawbar loading (in kg)	2700
Permissible overall weight (in kg)	18700

Transport position dimensions

Length (mm)	6490
Width (mm)	2550
Height (mm)	4000

Control system

easygreen	●
DIP	●
automatic overload control	●
Draw-in speed preselection	●
15-channel radio remote control	◐
Z-tronic	●

Mobile chipper on centre-axle trailer

Mobile chipper on centre-axle trailer



Compact mobile chipper with longitudinal draw-in and add-on motor

HEM 420 DL



short facts

Performance potential

Fragmentisation of hardwood up to (in cm)	30
Fragmentisation of softwood up to (in cm)	42
Throughput up to approx. (in lcm)	100

Draw-in opening

Draw-in width (mm)	1000
Draw-in height (mm)	420

Fragmentisation unit

Drum diameter (mm)	620
Number of blades, half-fitting (full)	10 (20)

Material outfeed

Mechanical blower outfeed	●
Hydraulic blower outfeed	○
Conveyor outfeed	○

Main drive

Standard diesel motor	Mercedes-Benz, OM 926 LA, Euromot 3B
Power in kW / HP	240 / 326

Chassis

Number of axles	2
Top speed (km/h)	60

Weight (without crane)

Weight / basic design approx. (in kg)	13000
Permissible axle loading (in kg)	13000
Permissible drawbar loading (in kg)	1000
Permissible overall weight (in kg)	14000

Transport position dimensions

Length (mm)	7500
Width (mm)	2550
Height (mm)	3650

Control system

easygreen	●
DIP	●
Sensotronic	●
automatic overload control	●
Draw-in speed preselection	●
15-channel radio remote control	⊖

Field of application:

- shrubs and standing timber up to approx. 420 mm diameter
- flexible working on both sides

Besonderheiten:

- smallest JENZ mobile chipper with add-on motor
- pivoted chipper
- low deadweight

All data is based on the basic machine version and should be taken as an approximation.
 ● Included in standard machine delivery ⊖ Option, available at extra cost ○ Not available

HEM 420 DQ

Compact mobile chipper with transverse draw-in and add-on motor

short facts

Performance potential

Fragmentisation of hardwood up to (in cm)	30
Fragmentisation of softwood up to (in cm)	42
Throughput up to approx. (in lcm)	100

Draw-in opening

Draw-in width (mm)	1000
Draw-in height (mm)	420

Fragmentisation unit

Drum diameter (mm)	620
Number of blades, half-fitting (full)	10 (20)

Material outfeed

Mechanical blower outfeed	●
Hydraulic blower outfeed	○
Conveyor outfeed	○

Main drive

Standard diesel motor	Mercedes-Benz, OM 926 LA, Euromot 3B
Power in kW / HP	240 / 326

Chassis

Number of axles	2
Top speed (km/h)	60

Weight (without crane)

Weight / basic design approx. (in kg)	13000
Permissible axle loading (in kg)	16000
Permissible drawbar loading (in kg)	1000
Permissible overall weight (in kg)	17000

Transport position dimensions

Length (mm)	8010
Width (mm)	2550
Height (mm)	3600

Control system

easygreen	●
DIP	●
Sensotronic	●
automatic overload control	●
Draw-in speed preselection	●
15-channel radio remote control	○



Field of application:

- shrubs and standing timber up to approx. 420 mm diameter
- ideal for working in restricted spaces

Special features:

- smallest JENZ mobile chipper with add-on motor
- low deadweight
- compact dimensions

Medium segment chipper with longitudinal draw-in and add-on motor

HEM 561 DL



short facts

Performance potential

Fragmentisation of hardwood up to (in cm) 42

Fragmentisation of softwood up to (in cm) 56

Throughput up to approx. (in lcm) 150

Draw-in opening

Draw-in width (mm) 1000

Draw-in height (mm) 650

Fragmentisation unit

Drum diameter (mm) 820

Number of blades, half-fitting (full) 10 (20)

Material outfeed

Mechanical blower outfeed ●

Hydraulic blower outfeed ○

Conveyor outfeed ○

Main drive

Standard diesel motor Mercedes-Benz, OM 471 LA, Emiss cat. IV

Power in kW / HP 360 / 490

Chassis

Number of axles 2

Top speed (km/h) 80

Weight (without crane)

Weight / basic design approx. (in kg) 16000

Permissible axle loading (in kg) 16000

Permissible drawbar loading (in kg) 1000

Permissible overall weight (in kg) 17000

Transport position dimensions

Length (mm) 8535

Width (mm) 2550

Height (mm) 3800

Control system

easygreen ●

DIP ●

Sensotronic ●

automatic overload control ●

Draw-in speed preselection ●

15-channel radio remote control ○

Field of application:

- shrubs and standing timber up to approx. 560 mm diameter
- flexible working on both sides
- high-powered chipping independent of towing vehicle

Special features:

- driver via high-powered add-on motor
- pivoted chipper
- generously-dimensioned longitudinal draw-in makes processing bulky material easier
- low deadweight

All data is based on the basic machine version and should be taken as an approximation.
 ● Included in standard machine delivery ● Option, available at extra cost ○ Not available

HEM 561 DQ

Medium segment chipper with transverse draw-in and add-on motor

short facts

Performance potential

Fragmentisation of hardwood up to (in cm)	42
Fragmentisation of softwood up to (in cm)	56
Throughput up to approx. (in lcm)	150

Draw-in opening

Draw-in width (mm)	1000
Draw-in height (mm)	650

Fragmentisation unit

Drum diameter (mm)	820
Number of blades, half-fitting (full)	10 (20)

Material outfeed

Mechanical blower outfeed	●
Hydraulic blower outfeed	○
Conveyor outfeed	○

Main drive

Standard diesel motor	Mercedes-Benz, OM 471 LA, Emiss cat. IV
Power in kW / HP	360 / 490

Chassis

Number of axles	2
Top speed (km/h)	80

Weight (without crane)

Weight / basic design approx. (in kg)	13400
Permissible axle loading (in kg)	16000
Permissible drawbar loading (in kg)	1000
Permissible overall weight (in kg)	17000

Transport position dimensions

Length (mm)	8000
Width (mm)	2550
Height (mm)	3660

Control system

easygreen	●
DIP	●
Sensotronic	●
automatic overload control	●
Draw-in speed preselection	●
15-channel radio remote control	○



Field of application:

- shrubs and standing timber up to approx. 560 mm diameter
- high-powered chipping independent of towing vehicle

Special features:

- manageable purchase and operating costs
- chipper drive via high-powered add-on motor
- low deadweight

Professional mobile chipper with add-on motor

HEM 582 DQ



short facts

Performance potential

Fragmentisation of hardwood up to (in cm)	45
Fragmentisation of softwood up to (in cm)	56
Throughput up to approx. (in lcm)	180

Draw-in opening

Draw-in width (mm)	1200
Draw-in height (mm)	680

Fragmentisation unit

Drum diameter (mm)	820
Number of blades, half-fitting (full)	12 (24)

Material outfeed

Mechanical blower outfeed	●
Hydraulic blower outfeed	○
Conveyor outfeed	○

Main drive

Standard diesel motor	Mercedes-Benz, OM 460 LA, Euromot 3B
Power in kW / HP	375 / 510

Chassis

Number of axles	2
Top speed (km/h)	80

Weight (without crane)

Weight / basic design approx. (in kg)	16000
Permissible axle loading (in kg)	18000
Permissible drawbar loading (in kg)	2000
Permissible overall weight (in kg)	20000

Transport position dimensions

Length (mm)	8300
Width (mm)	2550
Height (mm)	3700

Control system

easygreen	●
DIP	●
Sensotronic	●
automatic overload control	●
Draw-in speed preselection	●
15-channel radio remote control	⊖

Field of application:

- shrubs and standing timber up to approx. 560 mm diameter
- high-powered chipping independent of towing vehicle

Special features:

- driver via high-powered add-on motor
- 1.20 m wide draw-in makes processing of bulky material easier
- extra-large screen area for best chipping quality
- enormous screen basket cover swivel capability for optimal accessibility of rotor and screen basket changing without tools
- material outfeed via blower and/or conveyor belt

All data is based on the basic machine version and should be taken as an approximation.
 ● Included in standard machine delivery ⊖ Option, available at extra cost ○ Not available

HEM 700 DL

High-powered mobile chipper with longitudinal draw-in and add-on motor

short facts

Performance potential

Fragmentisation of hardwood up to (in cm)	50
Fragmentisation of softwood up to (in cm)	70
Throughput up to approx. (in lcm)	220

Draw-in opening

Draw-in width (mm)	1000
Draw-in height (mm)	700

Fragmentisation unit

Drum diameter (mm)	1040
Number of blades, half-fitting (full)	10 (20)

Material outfeed

Mechanical blower outfeed	●
Hydraulic blower outfeed	◐
Conveyor outfeed	◐

Main drive

Standard diesel motor	Mercedes-Benz, OM 473 LA, Emiss cat. IV
Power in kW / HP	400 / 544
CAT C18 Level 2	◐

Chassis

Number of axles	2
Top speed (km/h)	80

Weight (without crane)

Weight / basic design approx. (in kg)	17500
Permissible axle loading (in kg)	20000
Permissible drawbar loading (in kg)	1000
Permissible overall weight (in kg)	21000

Transport position dimensions

Length (mm)	9700
Width (mm)	2550
Height (mm)	3850

Control system

easygreen	●
DIP	●
Sensotronic	●
automatic overload control	●
Draw-in speed preselection	●
15-channel radio remote control	●



Field of application:

- shrubs and standing timber up to approx. 700 mm diameter
- ideal machine for long, thick standing timber
- flexible working on both sides
- high-powered chipping independent of towing vehicle

Special features:

- driver via high-powered add-on motor
- very high throughput rate
- pivoted chipper
- generously-dimensioned longitudinal draw-in makes processing bulky material easier
- material outfeed via blower or conveyor belt

Coarse chipper with transverse draw-in and add-on motor

HEM 820 DQ



short facts

Performance potential

Fragmentisation of hardwood up to (in cm)	60
Fragmentisation of softwood up to (in cm)	80
Throughput up to approx. (in lcm)	300

Draw-in opening

Draw-in width (mm)	1200
Draw-in height (mm)	820

Fragmentisation unit

Drum diameter (mm)	1040
Number of blades, half-fitting (full)	12 (24)

Material outfeed

Mechanical blower outfeed	●
Hydraulic blower outfeed	○
Conveyor outfeed	○

Main drive

Standard diesel motor	Mercedes-Benz, OM 473 LA, Emiss cat. IV
Power in kW / HP	400 / 544
CAT C18 Level 2	●

Chassis

Number of axles	2
Top speed (km/h)	80

Weight (without crane)

Weight / basic design approx. (in kg)	19500
Permissible axle loading (in kg)	20000
Permissible drawbar loading (in kg)	1000
Permissible overall weight (in kg)	21000

Transport position dimensions

Length (mm)	8700
Width (mm)	2550
Height (mm)	4000

Control system

easygreen	●
DIP	●
Sensotronic	●
automatic overload control	●
Draw-in speed preselection	●
15-channel radio remote control	●

Field of application:

- shrubs and standing timber up to approx. 800 mm diameter
- ideal machine for thick standing timber
- high-powered chipping in continuous operation, independent of towing vehicle

Special features:

- driver via high-powered add-on motor
- extremely high throughput rate
- large draw-in makes processing of bulky material and thick trunks easier
- extremely large screen area for best chipping quality
- enormous screen basket cover swivel capability for optimal accessibility of rotor and screen basket changing without tools

All data is based on the basic machine version and should be taken as an approximation.
 ● Included in standard machine delivery ● Option, available at extra cost ○ Not available

Mobile chipper on semi-trailer

Mobile chipper on semi-trailer



High-powered mobile chipper with longitudinal draw-in on semitrailer

HEM 700 DL



short facts

Performance potential

Fragmentisation of hardwood up to (in cm)	50
Fragmentisation of softwood up to (in cm)	70
Throughput up to approx. (in tcm)	220

Draw-in opening

Draw-in width (mm)	1000
Draw-in height (mm)	700

Fragmentisation unit

Drum diameter (mm)	1040
Number of blades, half-fitting (full)	10 (20)

Material outfeed

Mechanical blower outfeed	●
Hydraulic blower outfeed	◐
Conveyor outfeed	◑

Main drive

Standard diesel motor	Mercedes-Benz, OM 473 LA, Emiss cat. IV
Power in kW / HP	400 / 544
CAT C18 Level 2	◐

Chassis

Number of axles	2
Top speed (km/h)	80

Weight (without crane)

Weight / basic design approx. (in kg)	18500
Permissible axle loading (in kg)	18000
Permissible drawbar loading (in kg)	10000
Permissible overall weight (in kg)	28000

Transport position dimensions

Length (mm)	11900
Width (mm)	2500
Height (mm)	3900

Control system

easygreen	●
DIP	●
Sensotronic	●
automatic overload control	●
Draw-in speed preselection	●
15-channel radio remote control	●

Field of application:

- shrubs and standing timber up to approx. 700 mm diameter
- ideal machine for long, thick standing timber
- flexible working on both sides
- deployment with different towing vehicles
- large deployment radius

Special features:

- driver via high-powered add-on motor
- very high throughput rate
- pivoted chipper
- crane can be fitted to semitrailer
- generously-dimensioned longitudinal draw-in makes processing bulky material easier
- material outfeed via blower or conveyor belt
- 80 km/h top speed

All data is based on the basic machine version and should be taken as an approximation.
 ● Included in standard machine delivery ◐ Option, available at extra cost ○ Not available

HEM 820 DL

Coarse chipper with longitudinal draw-in and add-on motor on semitrailer

short facts

Performance potential

Fragmentisation of hardwood up to (in cm)	60
Fragmentisation of softwood up to (in cm)	80
Throughput up to approx. (in lcm)	300

Draw-in opening

Draw-in width (mm)	1200
Draw-in height (mm)	820

Fragmentisation unit

Drum diameter (mm)	1040
Number of blades, half-fitting (full)	12 (24)

Material outfeed

Mechanical blower outfeed	●
Hydraulic blower outfeed	○
Conveyor outfeed	◐

Main drive

Standard diesel motor	Mercedes-Benz, OM 473 LA, Emiss cat. IV
Power in kW / HP	400 / 544
CAT C18 Level 2	◐

Chassis

Number of axles	2
Top speed (km/h)	80

Weight (without crane)

Weight / basic design approx. (in kg)	25500
Permissible axle loading (in kg)	18000
Permissible drawbar loading (in kg)	10000
Permissible overall weight (in kg)	28000

Transport position dimensions

Length (mm)	6880
Width (mm)	2550
Height (mm)	4000

Control system

easygreen	●
DIP	●
Sensotronic	●
automatic overload control	●
Draw-in speed preselection	●
15-channel radio remote control	●



Field of application:

- shrubs and standing timber up to approx. 800 mm diameter
- ideal machine for long, thick standing timber
- flexible working on both sides
- chipping in continuous operation
- deployment with different towing vehicles
- large deployment radius

Special features:

- extremely high throughput rate
- pivoted chipper
- generously-dimensioned longitudinal draw-in makes processing bulky material easier
- extremely large screen area for best chipping quality
- enormous screen basket cover swivel capability for optimal accessibility of rotor and screen basket changing without tools
- only chipper in its class with combined material outfeed via blower and conveyor belt
- steered rear axle for maximum manoeuvrability

Largest and highest-powered mobile chipper from JENZ

Coarse chipper with longitudinal draw-in and add-on motor on semitrailer

HEM 1000 DXL



short facts

Performance potential

Fragmentisation of hardwood up to (in cm)	70
Fragmentisation of softwood up to (in cm)	100
Throughput up to approx. (in tcm)	360

Draw-in opening

Draw-in width (mm)	1200
Draw-in height (mm)	1000

Fragmentisation unit

Drum diameter (mm)	1450
Number of blades, half-fitting (full)	12 (24)

Material outfeed

Mechanical blower outfeed	<input type="radio"/>
Hydraulic blower outfeed	<input type="radio"/>
Conveyor outfeed	<input checked="" type="radio"/>

Main drive

Standard diesel motor	CAT C18 Level 2
Power in kW / HP	571 / 776

Chassis

Number of axles	3
Top speed (km/h)	80

Weight (without crane)

Weight / basic design approx. (in kg)	31000
Permissible axle loading (in kg)	24000
Permissible drawbar loading (in kg)	8000
Permissible overall weight (in kg)	32000

Transport position dimensions

Length (mm)	11300
Width (mm)	2550
Height (mm)	4000

Control system

easygreen	<input checked="" type="radio"/>
DIP	<input checked="" type="radio"/>
Sensotronic	<input checked="" type="radio"/>
automatic overload control	<input checked="" type="radio"/>
Draw-in speed preselection	<input checked="" type="radio"/>
15-channel radio remote control	<input checked="" type="radio"/>

Field of application:

- shrubs and standing timber up to approx. 1000 mm diameter
- mobile alternative to stationary chipper
- ideal machine for large quantities of standing timber
- industrial chipper deployment in continuous operation

Special features:

- largest and highest-powered mobile chipper from JENZ
- driver via high-powered add-on motor
- extremely high throughput rate
- generously-dimensioned longitudinal draw-in makes processing bulky material easier
- approved for 80 km/h top speed

Mobile chippers on caterpillar tracks

Mobile chippers on caterpillar tracks



Compact chipper with longitudinal draw-in,
add-on motor and caterpillar tracks

HEM 420 DL



short facts

Performance potential

Fragmentisation of hardwood up to (in cm)	30
Fragmentisation of softwood up to (in cm)	42
Throughput up to approx. (in lcm)	100

Draw-in opening

Draw-in width (mm)	1000
Draw-in height (mm)	420

Fragmentisation unit

Drum diameter (mm)	620
Number of blades, half-fitting (full)	10 (20)

Material outfeed

Mechanical blower outfeed	●
Hydraulic blower outfeed	○
Conveyor outfeed	○

Main drive

	Mercedes-Benz,
Standard diesel motor	OM 926 LA,
	Euromot 3B
Power in kW / HP	240 / 326

Chassis

Top speed (km/h)	1
------------------	---

Weight (without crane)

Weight / basic design approx. (in kg)	11000
---------------------------------------	-------

Transport position dimensions

Length (mm)	5500
Width (mm)	2550
Height (mm)	2800

Control system

easygreen	●
DIP	●
Sensotronic	●
automatic overload control	●
Draw-in speed preselection	●
Cable remote control	●
15-channel radio remote control	⊖

Field of application:

- shrubs and standing timber up to approx. 420 mm diameter
- deployment on extreme terrain and difficult soils
- flexible working on both sides

Special features:

- smallest JENZ mobile chipper with add-on motor
- caterpillar tracks for deployment on extreme terrain
- cable remote control
- pivoted chipper
- low deadweight
- problem-free transport on low loaders

All data is based on the basic machine version and should be taken as an approximation.
● Included in standard machine delivery ⊖ Option, available at extra cost ○ Not available

HEM 561 DL

Medium segment chipper with longitudinal draw-in, add-on motor and caterpillar tracks

short facts

Performance potential

Fragmentisation of hardwood up to (in cm)	42
Fragmentisation of softwood up to (in cm)	56
Throughput up to approx. (in lcm)	150

Draw-in opening

Draw-in width (mm)	1000
Draw-in height (mm)	650

Fragmentisation unit

Drum diameter (mm)	820
Number of blades, half-fitting (full)	10 (20)

Material outfeed

Mechanical blower outfeed	●
Hydraulic blower outfeed	○
Conveyor outfeed	○

Main drive

Standard diesel motor	Mercedes-Benz, OM 471 LA, Emiss cat. IV
Power in kW / HP	360 / 490

Chassis

Top speed (km/h)	1
------------------	---

Weight (without crane)

Weight / basic design approx. (in kg)	16500
---------------------------------------	-------

Transport position dimensions

Length (mm)	6500
Width (mm)	2900
Height (mm)	3400

Control system

easygreen	●
DIP	●
Sensotronic	●
automatic overload control	●
Draw-in speed preselection	●
Cable remote control	●
15-channel radio remote control	○



Field of application:

- shrubs and standing timber up to approx. 560 mm diameter
- deployment on extreme terrain and difficult soils
- flexible working on both sides
- high-powered chipping independent of towing vehicle

Special features:

- driver via high-powered add-on motor
- pivoted chipper
- generously-dimensioned longitudinal draw-in makes processing bulky material easier
- caterpillar tracks for deployment on extreme terrain
- cable remote control problem-free
- transport on low loaders

High-powered HGV chipper with add-on motor and caterpillar tracks

HEM 700 DL



short facts

Performance potential

Fragmentisation of hardwood up to (in cm)	50
Fragmentisation of softwood up to (in cm)	70
Throughput up to approx. (in tcm)	220

Draw-in opening

Draw-in width (mm)	1000
Draw-in height (mm)	700

Fragmentisation unit

Drum diameter (mm)	1040
Number of blades, half-fitting (full)	10 (20)

Material outfeed

Mechanical blower outfeed	●
Hydraulic blower outfeed	○
Conveyor outfeed	◐

Main drive

Standard diesel motor	Mercedes-Benz, OM 473 LA, Emiss cat. IV
Power in kW / HP	400 / 544
CAT C18 Level 2	◐

Chassis

Top speed (km/h)	1
------------------	---

Weight (without crane)

Weight / basic design approx. (in kg)	23500
---------------------------------------	-------

Transport position dimensions

Length (mm)	7300
Width (mm)	2800
Height (mm)	3600

Control system

easygreen	●
DIP	●
Sensotronic	●
automatic overload control	●
Draw-in speed preselection	●
Cable remote control	●
15-channel radio remote control	●

Field of application:

- shrubs and standing timber up to approx. 700 mm diameter
- deployment on extreme terrain and difficult soils
- ideal machine for long, thick standing timber
- flexible working on both sides

Special features:

- driver via high-powered add-on motor
- very high throughput rate
- pivoted chipper
- caterpillar tracks for deployment on extreme terrain
- radio remote control
- generously-dimensioned longitudinal draw-in makes processing bulky material easier
- material outfeed via blower or conveyor belt

Biomass processor on centre-axle trailer

Biomass processor on centre-axle trailer



Mobile biomass processor for small and medium-sized plants

AZ 460 D



short facts

Performance potential

Throughput up to approx. (in lcm)	
garden waste	80
bark	140
scrap wood	50

Draw-in

Draw-in width (mm)	1200
Intake height (mm)	460
free loading length (mm)	4000
Bunker volumes (m ³)	4

Fragmentisation unit

Rotor diameter (mm)	820
Number of flails	30

Conveyor outfeed

Drop height from (mm)	2850
-----------------------	------

Main drive

Standard diesel motor	Mercedes-Benz, OM 926 LA, Euromot 3B
Power in kW / HP	240 / 326

Chassis

Top speed (km/h)	80
------------------	----

Weight

Weight / basic design approx. (in kg)	11000
Permissible axle loading (in kg)	16000
Permissible drawbar loading (in kg)	1000
Permissible overall weight (in kg)	17000

Transport position dimensions

Length (mm)	10900
Width (mm)	2550
Height (mm)	3700

Control system

easygreen	●
JES	●
VARIO-Flex	○
IBC	○
DIP	●
Sensotronic	●
automatic overload control	●
Draw-in speed preselection	●
15-channel radio remote control	●

Field of application:

- composting in small and medium-sized plants
- composting (garden cuttings, organic waste)
- substrate fine crushing in biogas plants

Special features:

- easy system for simple tool changes requiring only one person
- compact dimensions
- low deadweight

BA 715 D

Mobile biomass processor for composting and biogas plants

short facts

Performance potential

Throughput up to approx. (in lcm)	
garden waste	140
bark	180

Draw-in

Draw-in width (mm)	1500
Intake height (mm)	820
free loading length (mm)	4000
Bunker volumes (m³)	6

Fragmentisation unit

Rotor diameter (mm)	1040
Number of flails	38

Conveyor outfeed

Drop height from (mm)	3200
-----------------------	------

Main drive

Standard diesel motor	Mercedes-Benz, OM 460 LA, Euromot 3B
Power in kW / HP	315 / 428

Chassis

Top speed (km/h)	80
------------------	----

Weight

Weight / basic design approx. (in kg)	17600
Permissible axle loading (in kg)	18000
Permissible drawbar loading (in kg)	1000
Permissible overall weight (in kg)	19000

Transport position dimensions

Length (mm)	10500
Width (mm)	2550
Height (mm)	3700

Control system

easygreen	●
JES	●
VARIO-Flex	●
IBC	●
DIP	●
Sensotronic	●
automatic overload control	●
Draw-in speed preselection	●
15-channel radio remote control	●



Field of application:

- composting (garden cuttings, organic waste)
- substrate fine crushing in biogas plants

Special features:

- VARIO-Flex control system for economic operation
- inexpensive machine with customised fittings
- easy system for simple tool changes requiring only one person

Mobile biomass processor for all deployment areas

BA 725 D



short facts

Performance potential

Throughput up to approx. (in lcm)	
garden waste	170
bark	220
scrap wood	110

Draw-in

Draw-in width (mm)	1500
Intake height (mm)	820
free loading length (mm)	4000
Bunker volumes (m³)	6

Fragmentisation unit

Rotor diameter (mm)	1040
Number of flails	38

Conveyor outfeed

Drop height from (mm)	3200
-----------------------	------

Main drive

Standard diesel motor	Mercedes-Benz, OM 460 LA, Euromot 3B
Power in kW / HP	375 / 510

Chassis

Top speed (km/h)	80
------------------	----

Weight

Weight / basic design approx. (in kg)	20000
Permissible axle loading (in kg)	20000
Permissible drawbar loading (in kg)	1000
Permissible overall weight (in kg)	21000

Transport position dimensions

Length (mm)	10900
Width (mm)	2550
Height (mm)	3970

Control system

easygreen	●
JES	●
VARIO-Flex	●
IBC	●
DIP	●
Sensotronic	●
automatic overload control	●
Draw-in speed preselection	●
15-channel radio remote control	●
IPS impact protection system	●

Field of application:

- ideal machine for changing deployment areas
- composting (garden cuttings, organic waste)
- standing timber, roots, scrap wood
- substrate fine crushing in biogas plants

Special features:

- VARIO-Flex control system for economic operation
- variable deployment areas thanks to Twin Gear drive for optimum rotor speed
- easy system for simple tool changes requiring only one person
- IPS impact protection system
- different centre-axle trailer variations possible (3-axle centre-axle trailer, 2-axle centre-axle trailer, axle spacing 1.31 or 1.81)

All data is based on the basic machine version and should be taken as an approximation.
● Included in standard machine delivery ● Option, available at extra cost ○ Not available

Biomass processor on semi-trailer

Biomass processor on semi-trailer



Mobile biomass processor for all deployment areas

BA 725 D



short facts

Performance potential

Throughput up to approx. (in lcm)	
garden waste	170
bark	220
scrap wood	110

Draw-in

Draw-in width (mm)	1500
Intake height (mm)	820
free loading length (mm)	4000
Bunker volumes (m ³)	6

Fragmentisation unit

Rotor diameter (mm)	1040
Number of flails	38

Conveyor outfeed

Drop height from (mm)	3200
-----------------------	------

Main drive

Standard diesel motor	Mercedes-Benz, OM 460 LA, Euromot 3B
Power in kW / HP	375 / 510

Chassis

Top speed (km/h)	80
------------------	----

Weight

Weight / basic design approx. (in kg)	20500
Permissible axle loading (in kg)	18000
Permissible drawbar loading (in kg)	10000
Permissible overall weight (in kg)	28000

Transport position dimensions

Length (mm)	11960
Width (mm)	2550
Height (mm)	3990

Control system

easygreen	●
JES	●
VARIO-Flex	●
IBC	●
DIP	●
Sensotronic	●
automatic overload control	●
Draw-in speed preselection	●
15-channel radio remote control	●
IPS impact protection system	●

Field of application:

- ideal machine for changing deployment areas
- composting (garden cuttings, organic waste)
- standing timber, roots, scrap wood
- substrate fine crushing in biogas plants

Special features:

- wide-ranging equipment options due to higher permissible overall weight
- VARIO-Flex control system for economic operation
- variable deployment areas thanks to Twin Gear drive for optimum rotor speed
- easy system for simple tool changing using only one person
- IPS impact protection system
- transport with all semitrailer tractors

All data is based on the basic machine version and should be taken as an approximation.
● Included in standard machine delivery ● Option, available at extra cost ○ Not available

BA 725 DXL

Mobile biomass processor for all deployment areas

short facts

Performance potential

Throughput up to approx. (in lcm)	
garden waste	170
bark	220
scrap wood	110

Draw-in

Draw-in width (mm)	1500
Intake height (mm)	820
free loading length (mm)	6000
Bunker volumes (m ³)	10

Fragmentisation unit

Rotor diameter (mm)	1040
Number of flails	38

Conveyor outfeed

Drop height from (mm)	3200
-----------------------	------

Main drive

Standard diesel motor	Mercedes-Benz, OM 460 LA, Euromot 3B
Power in kW / HP	375 / 510

Chassis

Top speed (km/h)	80
------------------	----

Weight

Weight / basic design approx. (in kg)	22600
Permissible axle loading (in kg)	18000
Permissible drawbar loading (in kg)	10000
Permissible overall weight (in kg)	28000

Transport position dimensions

Length (mm)	12230
Width (mm)	2550
Height (mm)	3990

Control system

easygreen	●
JES	●
VARIO-Flex	●
IBC	●
DIP	●
Sensotronic	●
automatic overload control	●
Draw-in speed preselection	●
15-channel radio remote control	●
IPS impact protection system	●



Field of application:

- ideal machine for changing deployment areas
- composting (garden cuttings, organic waste)
- standing timber, roots, scrap wood
- substrate fine crushing in biogas plants

Special features:

- wide-ranging equipment options due to higher permissible overall weight
- VARIO-Flex control system for economic operation
- variable deployment areas thanks to Twin Gear drive for optimum rotor speed
- easy system for simple tool changes requiring only one person
- IPS impact protection system
- long belt hopper for continuous materials flow
- transport with all semitrailer tractors

Mobile biomass processor with especially high power

BA 965 DXL



short facts

Performance potential

Throughput up to approx. (in tcm)	
garden waste	270
bark	350
scrap wood	170
Domestic waste	280

Draw-in

Draw-in width (mm)	1620
Intake height (mm)	960
free loading length (mm)	6000
Bunker volumes (m ³)	10

Fragmentisation unit

Rotor diameter (mm)	1120
Number of flails	42

Conveyor outfeed

Drop height from (mm)	3200
-----------------------	------

Main drive

Standard diesel motor	CAT C18 Level 2
Power in kW / HP	571 / 776

Chassis

Top speed (km/h)	80
------------------	----

Weight

Weight / basic design approx. (in kg)	26300
Permissible axle loading (in kg)	24000
Permissible drawbar loading (in kg)	10000
Permissible overall weight (in kg)	34000

Transport position dimensions

Length (mm)	12990
Width (mm)	2550
Height (mm)	3990

Control system

easygreen	●
JES	●
VARIO-Flex	●
IBC	●
DIP	●
Sensotronic	●
automatic overload control	●
Draw-in speed preselection	●
15-channel radio remote control	●
IPS impact protection system	●

Field of application:

- machine for universal deployment
- extremely high throughput rate
- composting (garden cuttings, organic waste)
- standing timber, roots, scrap wood
- substrate fine crushing

Special features:

- extremely high-powered machine
- VARIO-Flex control system for economic operation
- easy system for simple tool changes requiring only one person
- IPS impact protection system
- long belt hopper for continuous materials flow
- transport with all semitrailer tractors

Biomass processor on caterpillar tracks

Biomass processor on caterpillar tracks



Mobile biomass processor for all deployment areas with caterpillar tracks

BA 725 D



short facts

Performance potential

Throughput up to approx. (in lcm)	
garden waste	170
bark	220
scrap wood	110

Draw-in

Draw-in width (mm)	1500
Intake height (mm)	820
free loading length (mm)	4000
Bunker volumes (m³)	6

Fragmentisation unit

Rotor diameter (mm)	1040
Number of flails	38

Conveyor outfeed

Drop height from (mm)	3200
-----------------------	------

Main drive

Standard diesel motor	Mercedes-Benz, OM 460 LA, Euromot 3B
Power in kW / HP	375 / 510

Chassis

Top speed (km/h)	1
------------------	---

Weight

Weight / basic design approx. (in kg)	24400
---------------------------------------	-------

Transport position dimensions

Length (mm)	9000
Width (mm)	3000
Height (mm)	3620

Control system

easygreen	●
JES	●
VARIO-Flex	●
IBC	●
DIP	●
Sensotronic	●
automatic overload control	●
Draw-in speed preselection	●
15-channel radio remote control	●
IPS impact protection system	●

Field of application:

- ideal machine for changing deployment areas
- composting (garden cuttings, organic waste)
- standing timber, roots, scrap wood
- substrate fine crushing
- deployment on extreme terrain and difficult soils and restricted space

Special features:

- VARIO-Flex control system for economic operation
- variable deployment areas thanks to Twin Gear drive for optimum rotor speed
- easy system for simple tool changing using only one person
- IPS impact protection system
- caterpillar tracks for deployment on extreme terrain

All data is based on the basic machine version and should be taken as an approximation.
 ● Included in standard machine delivery ● Option, available at extra cost ○ Not available

BA 965 DXL

Biomass processor with extremely high power on caterpillar tracks

short facts

Performance potential

Throughput up to approx. (in lcm)	
garden waste	270
bark	350
scrap wood	170
Domestic waste	280

Draw-in

Draw-in width (mm)	1620
Intake height (mm)	960
free loading length (mm)	6000
Bunker volumes (m³)	10

Fragmentisation unit

Rotor diameter (mm)	1120
Number of flails	42

Conveyor outfeed

Drop height from (mm)	3200
-----------------------	------

Main drive

Standard diesel motor	CAT C18 Level 2
Power in kW / HP	571 / 776

Chassis

Top speed (km/h)	1
------------------	---

Weight

Weight / basic design approx. (in kg)	29000
---------------------------------------	-------

Transport position dimensions

Length (mm)	12650
Width (mm)	3000
Height (mm)	3790

Control system

easygreen	●
JES	●
VARIO-Flex	●
IBC	●
DIP	●
Sensotronic	●
automatic overload control	●
Draw-in speed preselection	●
15-channel radio remote control	●
IPS impact protection system	●



Field of application:

- machine for universal deployment
- extremely high throughput rate
- deployment on extreme terrain and difficult soils and restricted space
- composting (garden cuttings, organic waste)
- standing timber, roots, scrap wood
- substrate fine crushing

Special features:

- extremely high-powered machine
- VARIO-Flex control system for economic operation
- Easy system for simple tool changes requiring only one person
- IPS impact protection system
- long belt hopper for continuous materials flow
- caterpillar tracks for deployment on extreme terrain

Data comparison biomass processor

	AZ 460 D	BA 715 D	BA 725 D	BA 725 D	BA 725 DXL	BA 965 DXL	BA 725 D	BA 965 DXL
	Biomass processor on centre-axle trailer			Biomass processor on semi-trailer			Biomass processor on caterpillar tracks	
Performance potential								
Throughput up to approx. (in lcm)								
garden waste	80	140	170	170	170	270	170	270
bark	140	180	220	220	220	350	220	350
scrap wood	50	-	110	110	110	170	110	170
domestic waste	-	-	-	-	-	280	-	280
Draw-in								
Draw-in width (mm)	1200	1500	1500	1500	1500	1620	1500	1620
Intake height (mm)	460	820	820	820	820	960	820	960
free loading length (mm)	4000	4000	4000	4000	6000	6000	4000	6000
Bunker volumes (m³)	4	6	6	6	10	10	6	10
Fragmentisation unit								
Rotor diameter (mm)	820	1040	1040	1040	1040	1120	1040	1120
Number of flails	30	38	38	38	38	42	38	42
Conveyor outfeed								
Drop height from (mm)	2850	3200	3200	3200	3200	3200	3200	3200
Main drive								
Standard diesel motor	Mercedes-Benz, OM 926 LA, Euromot 3B	Mercedes-Benz, OM 460 LA, Euromot 3B	Mercedes-Benz, OM 460 LA, Euromot 3B	Mercedes-Benz, OM 460 LA, Euromot 3B	Mercedes-Benz, OM 460 LA, Euromot 3B	CAT C18 Level 2	Mercedes-Benz, OM 460 LA, Euromot 3B	CAT C18 Level 2
Power in kW / HP	240 / 326	315 / 428	375 / 510	375 / 510	375 / 510	571 / 776	375 / 510	571 / 776
Chassis								
Top speed (km/h)	80	80	80	80	80	80	1	1
Weight								
Weight / basic design approx. (in kg)	11000	17600	20000	20500	22600	26300	24400	29000
Permissible axle loading (in kg)	16000	18000	20000	18000	18000	24000	-	-
Permissible drawbar loading (in kg)	1000	1000	1000	10000	10000	10000	-	-
Permissible overall weight (in kg)	17000	19000	21000	28000	28000	34000	-	-
Transport position dimensions								
Length (mm)	10900	10500	10900	11960	12230	12990	9000	12650
Width (mm)	2550	2550	2550	2550	2550	2550	3000	3000
Height (mm)	3700	3700	3970	3990	3990	3990	3620	3790
Control system								
easygreen	●	●	●	●	●	●	●	●
JES	●	●	●	●	●	●	●	●
VARIO-Flex	◐	●	●	●	●	●	●	●
IBC	◐	●	●	●	●	●	●	●
DIP	●	●	●	●	●	●	●	●
Sensotronic	●	●	●	●	●	●	●	●
automatic overload control	●	●	●	●	●	●	●	●
Draw-in speed preselection	●	●	●	●	●	●	●	●
15-channel radio remote control	●	●	●	●	●	●	●	●
IPS impact protection system	○	○	●	●	●	●	●	●

All data is based on the basic machine version and should be taken as an approximation.
 ● Included in standard machine delivery ◐ Option, available at extra cost ○ Not available

Data comparison chipper

	HEM 540 R-Truck	HEM 561 R-Truck	HEM 583 R-Truck	HEM 820 R-Truck	HEM 420 DL	HEM 420 DQ	HEM 561 DL
Chippertruck				Mobile chipper on HGV frame / hook lift			
Performance potential							
Fragmentisation of hardwood up to (in cm)	42	45	45	60	30	30	42
Fragmentisation of softwood up to (in cm)	56	56	56	80	42	42	56
Throughput up to approx. (in lcm)	100	150	200	280	100	100	150
Draw-in opening							
Draw-in width (mm)	790	1000	1200	1200	1000	1000	1000
Draw-in height (mm)	610	650	680	820	420	420	650
Fragmentisation unit							
Drum diameter (mm)	820	820	820	1040	620	620	820
Number of blades, half-fitting (full)	8 (16)	10	12 (24)	12 (24)	10 (20)	10 (20)	10 (20)
Material outfeed							
Mechanical blower outfeed	●	●	○	●	●	●	●
Hydraulic blower outfeed	○	○	●	●	○	○	○
Conveyor outfeed	○	○	●	○	○	○	○
Main drive							
Standard diesel motor	MAN, Euro 5	MAN, Euro 5	MAN, Euro 5	MAN, Euro 5	Mercedes-Benz, OM 926 LA, Euromot 3B	Mercedes-Benz, OM 926 LA, Euromot 3B	Mercedes-Benz, OM 471 LA, Emission cat. IV
Power in kW / HP	265 / 360	265 / 360	397 / 540	397 / 540	240 / 326	240 / 326	360 / 490
CAT C18 Level 2	○	○	○	○	○	○	○
Power consumption approx. (kW)	-	-	-	-	-	-	-
Chassis							
Number of axles	2	3	3	3	-	-	-
top speed (km/h)	80	80	80	80	-	-	-
Weight (without crane)							
Weight / basic design approx. (in kg)	17800	22750	24000	26000	11500	12000	13000
Permissible axle loading (in kg)	18000	26000	26000	26000	-	-	-
Permissible drawbar load (in kg)	-	-	-	-	-	-	-
Permissible overall weight (in kg)	18000	26000	26000	26000	-	-	-
Transport position dimensions							
Length (mm)	7650	7500	7700	7740	7000	7050	6925
Width (mm)	2550	2550	2550	2550	2550	2550	2550
Height (mm)	3800	3950	4000	4000	2400	2700	2670
Control system							
easygreen	●	●	●	●	●	●	●
DIP	●	●	●	●	●	●	●
Sensotronic	○	○	○	○	●	●	●
automatic overload control	●	●	●	●	●	●	●
Draw-in speed preselection	●	●	●	●	●	●	●
Cable remote control	○	○	○	○	○	○	○
15-channel radio remote control	●	●	●	●	●	●	●
Z-tronic	○	○	○	○	○	○	○

Data comparison chipper

HEM 561 DQ	HEM 581 DL	HEM 582 DQ	HEM 700 DL	HEM 820 DL	HEM 820 DQ	HEM 820 DQ-Truck	HEM 820 DQ
Mobile chipper on HGV frame / hook lift						Mobile chipper with hybrid technology	
42	42	45	50	60	60	60	60
56	56	56	70	80	80	80	80
150	170	180	220	300	300	320	320
1000	1200	1200	1000	1200	1200	1200	1200
650	680	680	700	820	820	820	820
820	820	820	1040	1040	1040	1040	1040
10 (20)	12 (24)	12 (24)	10 (20)	12 (24)	12 (24)	12 (24)	12 (24)
●	●	●	●	●	●	●	●
○	○	○	◐	○	○	○	○
○	○	○	◐	○	○	○	○
Mercedes-Benz, OM 471 LA, Emission cat. IV	Mercedes-Benz, OM 471 LA, Emission cat. IV	Mercedes-Benz, OM 460 LA, Euromot 3B	Mercedes-Benz, OM 473 LA, Emission cat. IV	Mercedes-Benz, OM 473 LA, Emission cat. IV	Mercedes-Benz, OM 473 LA, Emission cat. IV	Mercedes-Benz, OM 473 LA, Emission cat. IV MAN, Euro 5	Mercedes-Benz, OM 473 LA, Emission cat. IV
360 / 490	390 / 530	375 / 510	400 / 544	400 / 544	400 / 544	400 / 544 324 / 440	400 / 544
○	○	○	◐	◐	◐	◐	◐
-	-	-	-	-	-	-	on request
-	-	-	-	-	-	4	2
-	-	-	-	-	-	80	80
13000	15500	15800	16500	19100	19500	32000	21500
-	-	-	-	-	-	32000	20000
-	-	-	-	-	-	-	2000
-	-	-	-	-	-	32000	22000
6310	7550	5850	7440	7870	7615	9650	8700
2550	2550	2550	2550	2550	2550	2550	2550
2700	2700	2850	2700	2790	3000	4000	4000
●	●	●	●	●	●	●	●
●	●	●	●	●	●	●	●
●	●	●	●	●	●	●	●
●	●	●	●	●	●	●	●
●	●	●	●	●	●	●	●
○	○	○	○	○	○	○	○
◐	◐	◐	◐	◐	◐	◐	◐
○	○	○	○	○	○	○	○

All data is based on the basic machine version and should be taken as an approximation.
 ● Included in standard machine delivery ◐ Option, available at extra cost ○ Not available

Data comparison chipper

	HEM 540 Z	HEM 561 Z	HEM 583 Z	HEM 820 Z	HEM 420 DL	HEM 420 DQ	HEM 561 DL	HEM 561 DQ
Power takeoff shaft-driven mobile chipper					Mobile chipper on centre-axle trailer			
Performance potential								
Fragmentisation of hardwood up to (in cm)	42	42	45	60	30	30	42	42
Fragmentisation of softwood up to (in cm)	56	56	56	80	42	42	56	56
Throughput up to approx. (in lcm)	100	120	200	260	100	100	150	150
Draw-in opening								
Draw-in width (mm)	790	1000	1200	1200	1000	1000	1000	1000
Draw-in height (mm)	610	650	680	820	420	420	650	650
Fragmentisation unit								
Drum diameter (mm)	820	820	820	1040	620	620	820	820
Number of blades, half-fitting (full)	8 (16)	10 (20)	12 (24)	12 (24)	10 (20)	10 (20)	10 (20)	10 (20)
Material outfeed								
Mechanical blower outfeed	●	●	○	●	●	●	●	●
Hydraulic blower outfeed	○	○	●	●	○	○	○	○
Conveyor outfeed	○	○	●	○	○	○	○	○
Main drive								
Standard diesel motor	-	-	-	-	Mercedes-Benz, OM 926 LA, Euromot 3B	Mercedes-Benz, OM 926 LA, Euromot 3B	Mercedes-Benz, OM 471 LA, Emiss. cat. IV	Mercedes-Benz, OM 471 LA, Emiss. cat. IV
Power in kW / HP	-	-	-	-	240 / 326	240 / 326	360 / 490	360 / 490
CAT C18 Level 2	○	○	○	○	○	○	○	○
Power consumption approx. (kW)	100 - 265	100 - 235	132 - 350	150 - 400	-	-	-	-
Chassis								
Number of axles	1	2	2	2	2	2	2	2
top speed (km/h)	60	80	80	80	60	60	80	80
Weight (without crane)								
Weight / basic design approx. (in kg)	8500	9600	11200	13800	13000	13000	16000	13400
Permissible axle loading (in kg)	10000	13000	16000	16000	13000	16000	16000	16000
Permissible drawbar load (in kg)	2000	1000	2000	2700	1000	1000	1000	1000
Permissible overall weight (in kg)	12000	14000	18000	18700	14000	17000	17000	17000
Transport position dimensions								
Length (mm)	5100	5920	6240	6490	7500	8010	8535	8000
Width (mm)	2550	2550	2550	2550	2550	2550	2550	2550
Height (mm)	3600	3600	3700	4000	3650	3600	3800	3660
Control system								
easygreen	●	●	●	●	●	●	●	●
DIP	●	●	●	●	●	●	●	●
Sensotronic	○	○	○	○	●	●	●	●
automatic overload control	●	●	●	●	●	●	●	●
Draw-in speed preselection	●	●	●	●	●	●	●	●
Cable remote control	○	○	○	○	○	○	○	○
15-channel radio remote control	●	●	●	●	●	●	●	●
Z-tronic	●	●	●	●	○	○	○	○

Data comparison chipper

HEM 582 DQ	HEM 700 DL	HEM 820 DQ	HEM 700 DL	HEM 820 DL	HEM 1000 DXL	HEM 420 DL	HEM 561 DL	HEM 700 DL
Mobile chipper on centre-axle trailer			Mobile chipper on semitrailer			Mobile chipper on caterpillar tracks		
45	50	60	50	60	70	30	42	50
56	70	80	70	80	100	42	56	70
180	220	300	220	300	360	100	150	220
1200	1000	1200	1000	1200	1200	1000	1000	1000
680	700	820	700	820	1000	420	650	700
820	1040	1040	1040	1040	1450	620	820	1040
12 (24)	10 (20)	12 (24)	10 (20)	12 (24)	12 (24)	10 (20)	10 (20)	10 (20)
●	●	●	●	●	○	●	●	●
○	●	○	●	○	○	○	○	○
○	●	○	●	●	●	○	○	●
Mercedes-Benz, OM 460 LA, Euromot 3B	Mercedes-Benz, OM 473 LA, Emission cat. IV	Mercedes-Benz, OM 473 LA, Emission cat. IV	Mercedes-Benz, OM 473 LA, Emission cat. IV	Mercedes-Benz, OM 473 LA, Emission cat. IV	CAT C18 Level 2	Mercedes-Benz, OM 926 LA, Euromot 3B	Mercedes-Benz, OM 471 LA, Emission cat. IV	Mercedes-Benz, OM 473 LA, Emission cat. IV
375 / 510	400 / 544	400 / 544	400 / 544	400 / 544	571 / 776	240 / 326	360 / 490	400 / 544
○	●	●	●	●	●	○	○	●
-	-	-	-	-	-	-	-	-
2	2	2	2	2	3	-	-	-
80	80	80	80	80	80	1	1	1
16000	17500	19500	18500	25500	31000	11000	16500	23500
18000	20000	20000	18000	18000	24000	-	-	-
2000	1000	1000	10000	10000	8000	-	-	-
20000	21000	21000	28000	28000	32000	-	-	-
8300	9700	8700	11900	6880	11300	5500	6500	7300
2550	2550	2550	2500	2550	2550	2550	2900	2800
3700	3850	4000	3900	4000	4000	2800	3400	3600
●	●	●	●	●	●	●	●	●
●	●	●	●	●	●	●	●	●
●	●	●	●	●	●	●	●	●
●	●	●	●	●	●	●	●	●
●	●	●	●	●	●	●	●	●
○	○	○	○	○	○	●	●	●
●	●	●	●	●	●	●	●	●
○	○	○	○	○	○	○	○	○

All data is based on the basic machine version and should be taken as an approximation.
 ● Included in standard machine delivery ● Option, available at extra cost ○ Not available

We are committed



JENZ contact data

General hours of business:

Monday to Thursday:
8:00 – 12:30 and 13:00 – 16:45
Friday:
7:30 – 12:30 and 13:00 – 16:15

Hours of business

Service/spare parts sales:

Monday to Thursday: 7:00 – 17:30
Friday: 7:00 – 16:30
Saturday: 7:00 – 12:15

General:

Phone: +49 (0)5704 9409-0
Fax: +49 (0)5704 9409-47
E-mail: info@jenz.de

Service:

Phone: +49 (0)5704 9409-20 and +49 (0)5704 9409-30
Fax: +49 (0)5704 9409-40
E-mail: service@jenz.de

Spare parts:

Phone: +49 (0)5704 9409-16 and +49 (0)5704 9409-21
Fax: +49 (0)5704 9409-40
E-mail: parts@jenz.de



www.jenz.de



JENZ GmbH

Maschinen- und Fahrzeugbau

Wegholmer Str. 14 | D-32469 Petershagen

Phone: +49 (0) 5704/9409-0

Fax: +49 (0) 5704/9409-47

E-mail: info@jenz.de

